

ILLUSTRATED PARTS LIST

COMMERCIAL 10-A



 **GRAVELY**

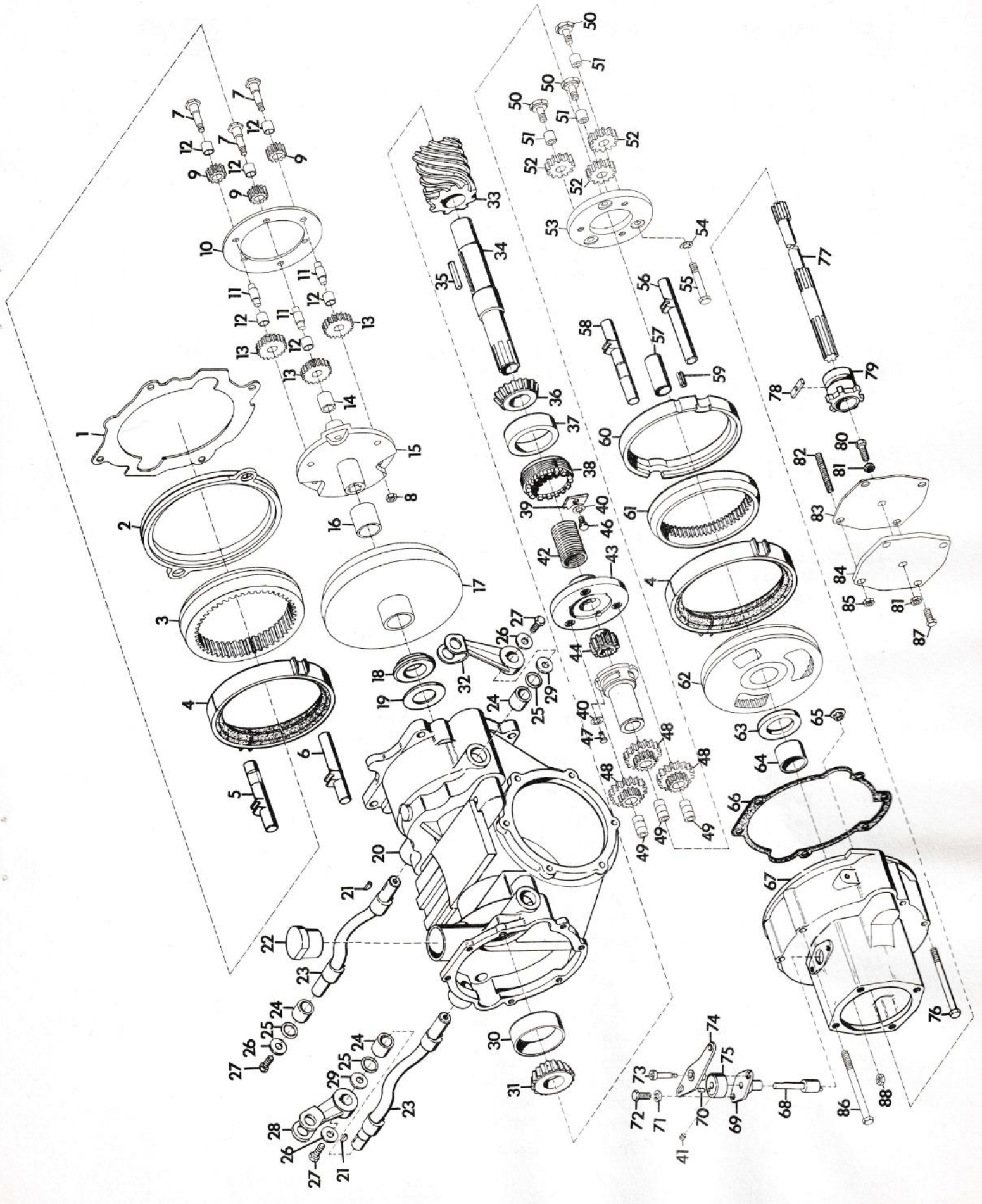
1 GRAVELY LANE DUNBAR WEST VIRGINIA 25064

A Division of Studebaker Corporation

INDEX

	<u>PAGE</u>
TRANSMISSION	1-2-3
AXLE HOUSING ASSEMBLY	4
TWO SPEED DIFFERENTIAL ASSEMBLY	5-6
HANDLE BARS AND CONTROLS	7-8
GAS TANK	9
GRILLE AND ELECTRICAL COMPONENTS	10-11
WIRING DIAGRAM	12
ENGINE	13-14-15-16
WHEEL ASSEMBLY	17
REAR HITCH	18
TRAILING HITCH KIT	19
COUPLER STRUT WELDMENT KIT	20

TRANSMISSION



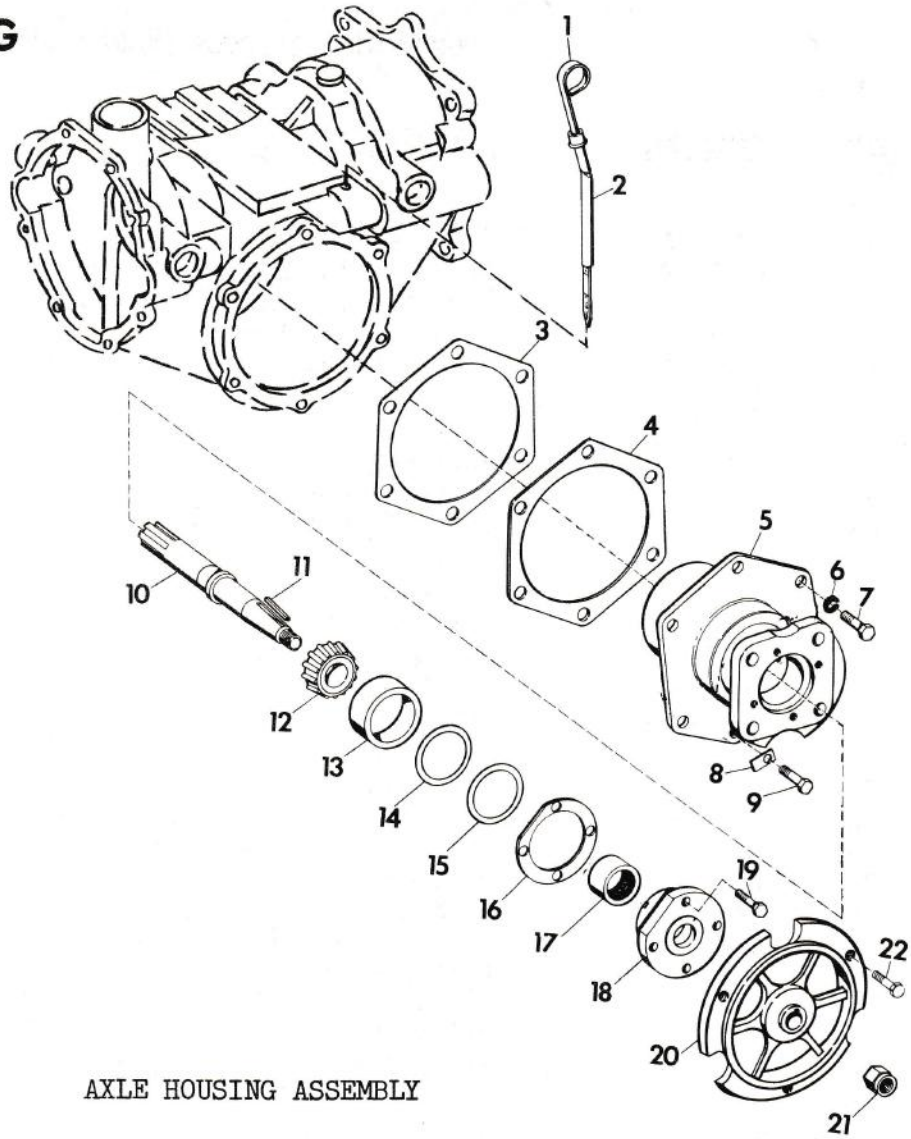
COMMERCIAL TRACTOR TRANSMISSION

<u>ITEM NO.</u>	<u>PART NO.</u>	<u>DESCRIPTION</u>	<u>REPLACES PART NO.</u>
1	10 635 P1	Gasket Chassis to Adaptor	
2	11 183 P1	Rear Spacer	
3	11 182 P1	Rear Ring Gear	
4	L-517	Clutch Cup	
5	11 185 P1	Clutch Slide Rod, Right Hand	
6	11 184 P1	Clutch Slide Rod, Left Hand	
7	11 181 P1	Orbit Gear Pin	
8	11 342 P1	5/16 Hex. Lock Nut	
9	11 180 P1	Orbit Gear	
10	11 178 P1	Pin Spacer	
11	11 174 P1	Orbit Gear Pin	
12	11 177 P1	Orbit Gear Bushing	
13	11 176 P1	Orbit Gear	
14	11 172 P1	Planet Carrier Bushing	
15	11 173 P1	Planet Gear Carrier	
16	11 169 P1	Ring Gear Bushing	
17	11 170 P1	Ring Gear	
18	L-519	Rear Thrust Plate	
19	2 211	Rear Thrust Plate Shim (.020) Svc. Prt. Only	
20	10 628 P1	Chassis Casting	
21	124 545	Woodruff Key	
22	10 617 P1	Oil Filter Plug	
23	10 625 P1	Clutch Actuating Shaft	
24	10 618 P1	Clutch Actuating Shaft Bushing	
25	10 663 P1	O-Ring	
26	446 477	7/16 Washer	
27	180 116	3/8 x 1/2 Hex. Hd. Bolt	
28	10 673 P1	Actuating Shaft Lever For-Rev	
29	10 714 P1	Washer	
30	10 390 P1	Bearing Cup, Engine Side	
31	10 389 P1	Bearing Cone, Engine Side	
32	10 660 P2	Actuating Shaft Lever Hi-Lo	
33	L-601-8	Worm Gear Regular 8-Lead Worm	
34	L-521	Worm Shaft	
35	L-608	Worm Shaft Key	
36	L-522-C	Bearing Cone	
37	L-522-R	Bearing Race	
38	L-507	Bearing Adjusting Nut	
39	L-523	Adjusting Nut Lock	
40	120 423	1/4 Lock Washer	303-W
41	102 592	3/8 x 3/8 Allen Hd. Set Screw	
42	L-547	Pin Plate Spacer Spring	
43	L-505	Front Pin Plate	
44	L-510	Sun Pinion	
45	L-536	Pin Plate Quill	
46	180 018	1/4 x 5/8 Hex. Hd. Bolt	
47	180 016	1/4 x 1/2 Hex. Hd. Bolt	
48	L-513	Orbit Gear	
49	L-514	Orbit Gear Pin	
50	L-542	Reverse Idler Bolt	
51	L-541	Reverse Idler Bushing	
52	L-540	Reverse Idler Gear	
53	L-539	Front Pin Spacer	

COMMERCIAL TRACTOR TRANSMISSION (continued)

<u>ITEM NO.</u>	<u>PART NO.</u>	<u>DESCRIPTION</u>	<u>REPLACES PART NO.</u>
54	138 542	3/8 Lock Washer	
55	L-516-R	Spacer Bolt Front Pin Plate	
56	L-710-L	Clutch Slide Rod, Left Hand	
57	L-546	Pinion Shaft Bearing	
58	L-710-R	Clutch Slide Rod, Right Hand	
59	HE-106	3/8 x 1/2 Roll Pin	
60	L-508	Gear Cup	
61	L-501	Internal Gear	
62	L-538	Reverse Cone	
63	L-520	Front Thrust Plate	
64	L-532	Quill Bearing	
65	10 620 AI	Valve Assembly	
66	L-209	Chassis Front Gasket	
67	10 626 PI	Advance Casting	
68	10 686 PI	Shipper Shaft	
69	10 687 PI	Shipper Shaft Guide	
70	455 481	3/16 x 1 Roll Pin	HE-102
71	120 214	5/16 Lock Washer	313-W
72	180 075	5/16 x 5/8 Hex. Hd. Bolt	
73	10 692 PI	5/16 Socket Shoulder Screw	
74	10 689 AI	Shifter Arm	
75	10 688 PI	Shifter Body	
76	180 735	5/16 x 3 1/4 Hex. Hd. Bolt	
77	L-543	Pinion Shaft	
78	L-226	Dog Block	
79	L-544	Clutch Dog	
80	180 132	3/8 x 2 1/4 Hex. Hd. Bolt	151-S
81	120 377	3/8 Hex. Nut	205-N
82	12 110 PI	Stud	
83	L-229	Attachment Boss Cover Gasket	
84	L-228	Attachment Boss Plate	
85	120 238	1/2 Hex. Nut	
86	187 147	5/16 x 3 1/2 Hex. Hd. Bolt	
87	180 175	1/2 x 1 1/4 Hex. Hd. Bolt	152-S
88	124 824	5/16 Hex. Nut	

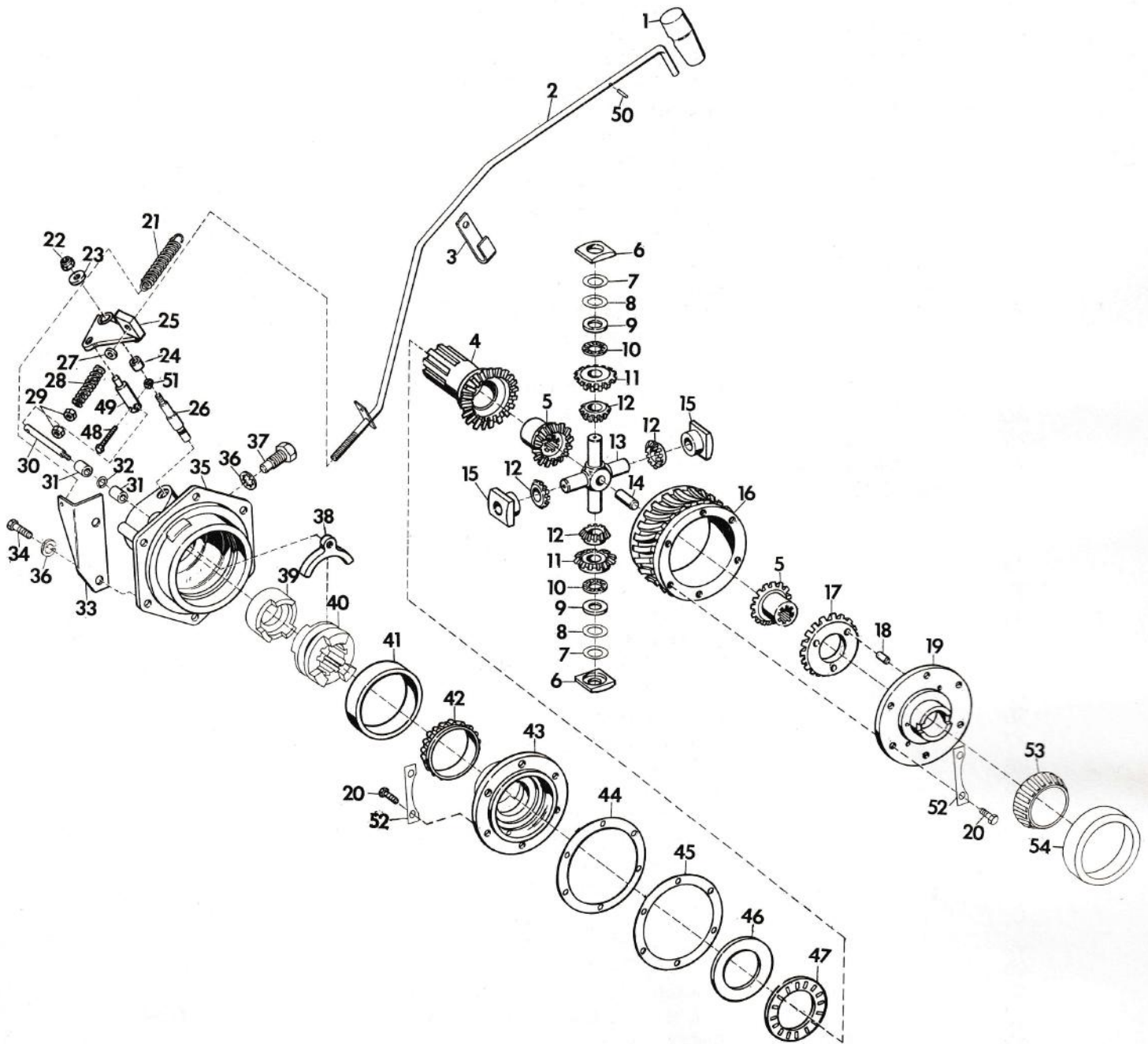
AXLE HOUSING ASSEMBLY



AXLE HOUSING ASSEMBLY

<u>ITEM NO.</u>	<u>PART NO.</u>	<u>DESCRIPTION</u>	<u>REPLACES PART NO.</u>
1	10 622 A1	Dip Stick Assembly	
2	10 586 P1	Dip Stick Guide	
3	L-220-A	Shim (.005 As req'd)	
	L-220-B	Shim (.020 As req'd)	
4	L-220-G	Gasket	
5	10 380 P1	Axle Housing	
6	120 239	1/2 Lock Washer	
7	180 173	1/2 x 1 Hex. Hd. Bolt	160-S
8	L-215	Oil Drain Washer	
9	123-S	1/2 x 7/8 Hex. Hd. Bolt Nylon Insert	
10	10 377 P1	Axle	
11	L-615	Axle Key	
12	9 246 P1	Bearing Cone	
13	9 245 P1	Bearing Cup	
14	10 382 P1	Shim .020	
15	10 383 P1	Shim .005	
16	10 384 P1	Bearing Cap Gasket	
17	L-208	Oil Seal	
18	10 379 P1	Bearing Cap	
19	180 077	5/16 x 3/4 Hex. Hd. Bolt	
20	L-614-B	Wheel Hub	
21	227-N	5/8 Lock Nut	
22	122 104	3/8 x 5/8 Hex. Hd. Bolt	

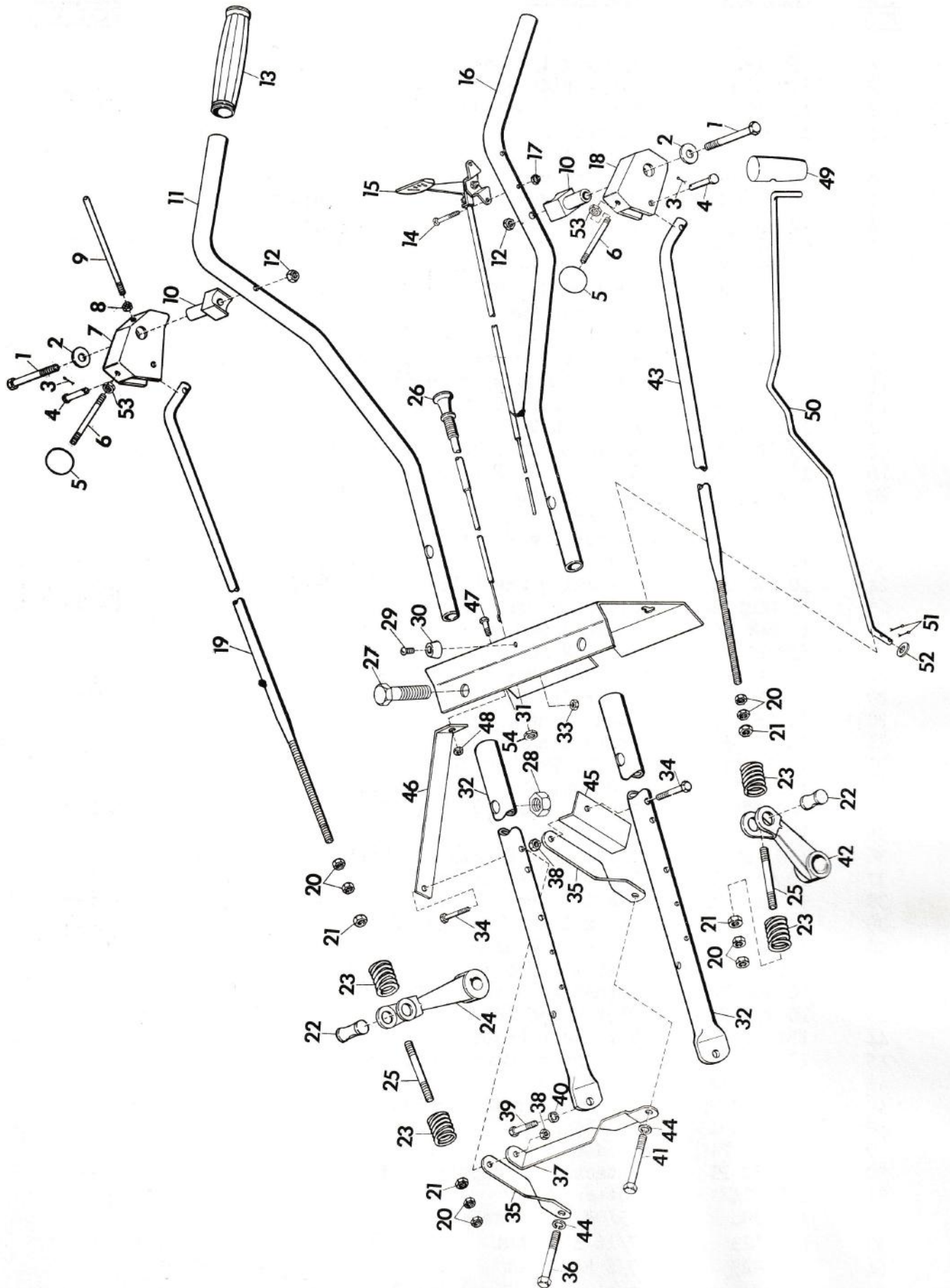
TWO SPEED DIFFERENTIAL ASSEMBLY



TWO-SPEED DIFFERENTIAL ASSEMBLY

<u>ITEM NO.</u>	<u>PART NO.</u>	<u>DESCRIPTION</u>	<u>REPLACES PART NO.</u>
1	10 683 P1	Handle	
2	10 677 A1	2-Speed Control Rod Weldment	
3	10 684 P1	2-Speed Control Retainer	
4	6 704 P1	Shifting Gear	
5	6 709 P1	Differential Gear	
6	6 715 P1	Spider Thrust Washer	
7	6 738 P1	Shim .020 (As req'd)	
8	6 737 P1	Shim .005 (As req'd)	
9	6 742 P1	Thrust Race	
10	6 741 P1	Needle Thrust Bearing	
11	6 702 P1	Shifting Train Pinion	
12	6 708 P1	Spider Gear	
13	6 710 P1	Spider Pin	
14	6 711 P1	Thrust Pin	
15	6 752 P1	Thrust Spacer	
16	6 705 P1	Worm Gear 8-Lead	
17	6 703 P1	Pinned Gear	
18	6 714 P1	Dowell Pin	
19	6 716 P1	Pinned Housing	
20	180 077	5/16 x 3/4 Hex. Hd. Bolt	
21	10 681 P1	Extension Spring	
22	9 419 455	5/16 Lock Nut	
23	120 393	11/32 Flat Washer	
24	6 724 P2	Pivot Bushing	
25	6 723 A1	Shifter Arm	
26	10 506 P1	Stationary Pivot Pin	
27	120 394	13/32 Flat Washer	403-W
28	10 682 P1	Compression Spring	
29	124 925	3/8 Hex. Nut	
30	6 721 P1	Clutch Sliding Pin	
31	6 713 P2	O-Ring Retainer	
32	6 732 P1	O-Ring	
33	10 680 P1	Spring Bracket	
34	180 173	1/2 x 1 Hex. Hd. Bolt	160-S
35	10 381 P2	Axle Housing	
36	120 239	1/2 Lock Washer	
37	6 734 P2	Stationary Clutch Bolt	
38	6 719 P1	Shifting Yoke	
39	11 156 P1	Stationary Clutch	
40	11 632 P1	Shifting Clutch	
41	RB-123-R	Bearing Race	
42	RB-123-C	Bearing Cone	
43	11 148 P1	Clutch Housing	
44	6 739 P1	Shim .005 (As req'd)	
45	6 740 P1	Shim .020 (As req'd)	
46	6 744 P1	Needle Thrust Race	
47	6 743 P1	Needle Thrust Bearing	
48	180 024	1/4 x 1 1/4 Hex. Hd. Bolt	185-S
49	6 726 P1	Shifting Pin	
50	9 423 664	3/32 x 11/16 Spring Pin	
51	9 413 314	1/4 Lock Nut	242-N
52	11 351 P1	Locking Plate	
53	RB-111-R	Bearing Cup	
54	RB-111-C	Bearing Cone	

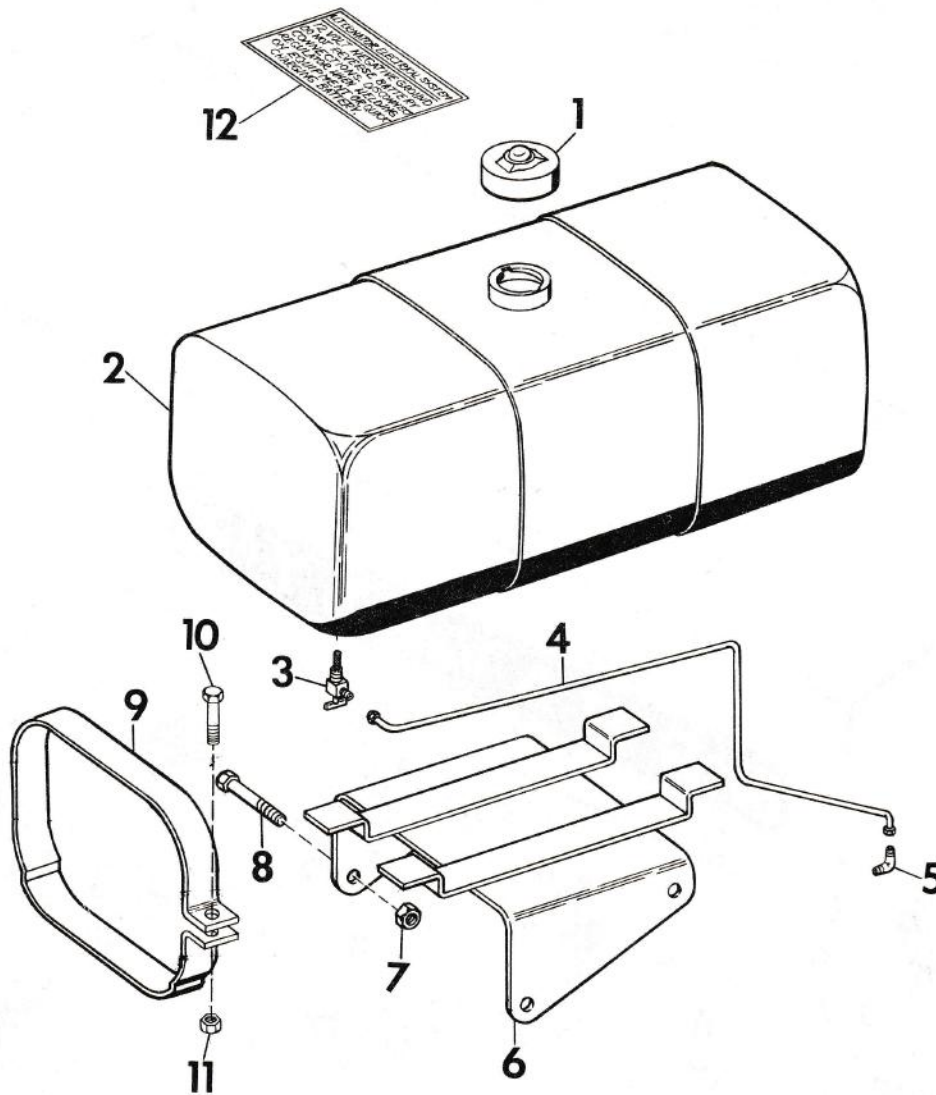
HANDLE BARS AND CONTROLS



HANDLE BARS AND CONTROLS FOR COMMERCIAL TRACTOR

<u>ITEM NO.</u>	<u>PART NO.</u>	<u>DESCRIPTION</u>	<u>REPLACES PART NO.</u>
1	180 192	1/2 x 3 1/2 Hex. Hd. Bolt	
2	120 396	17/32 Flat Washer	
3	177 923	1/8 x 3/4 Cotter Pin	609-C
4	10 672 P1	Clevis Pin	
5	10 670 P1	Control Knob	
6	10 669 P1	Shifter Rod	
7	10 665 P1	Forward Reverse Shifter Rod Support	
8	120 377	3/8 Hex. Nut	
9	10 668 P1	Shifter Rod (Threaded one end)	
10	10 667 P1	Handle Lever Pivot	
11	10 657 P1	Handle Bar, Right Hand	
12	435 507	1/2 Lock Nut	
13	10 671 P1	Handle Grip	
14	436 738	#10 x 1 1/2 Machine Screw	8 266
15	10 695 P1	Throttle Control Lever	
16	10 658 P1	Handle Bar, Left Hand	
17	190 254	#10 Lock Nut	
18	10 666 P1	Hi-Lo Shifter Rod Support	
19	10 664 P1	Clutch Rod (For-Rev)	
20	124 925	3/8 Hex. Nut	
21	124 934	1/2 Hex. Nut	
22	L-723	Clutch Rod Pivot	
23	11 779 P1	Spring	
24	10 673 P1	Actuating Shaft Lever (For-Rev)	
25	11 004 P1	Clutch Spring Sleeve	L-730 Thd
26	10 696 P1	Choke Control	
27	443 615	1/2 x 2 Hex. Hd. Bolt	
28	225 857	1/2 Hex. Nut	
29	120 910	#10 x 3/4 Machine Screw	102-S
30	10 654 P1	Hood Bumper, Top	
31	10 653 P2	Instrument Panel	
32	10 643 P1	Handle Support Tube	
33	120 361	#10 Hex. Nut	
34	180 132	3/8 x 2 1/4 Hex. Hd. Bolt	151-S
35	10 655 P1	Handle Brace	
36	180 149	7/16 x 1 1/2 Hex. Hd. Bolt	
37	10 656 P1	Handle Cross Brace	
38	9 414 201	3/8 Lock Nut	253-N
39	180 124	3/8 x 1 1/4 Hex. Hd. Bolt	112-S
40	120 382	3/8 Lock Washer	306-W
41	180 151	7/16 x 1 3/4 Hex. Hd. Bolt	
42	10 660 P2	Actuating Shaft Lever Hi-Lo	
43	10 733 P1	Clutch Rod (Hi-Lo)	
44	131 100	7/16 Lock Washer	
45	10 933 P1	Attachment Clutch Rod Stop	
46	10 996 P1	Brace	
47	180 018	1/4 x 5/8 Hex. Hd. Bolt	
48	9 419 454	1/4 Lock Nut	
49	10 683 P1	Handle	
50	10 932 P1	Attachment Throwout Rod	
51	121 224	Cotter Pin	
52	120 394	13/32 Flat Washer	
53	272 123	7/16 Hex. Nut	
54	107 823	3/8 Hex. Nut	
NS	11 981 P1	Instrument Panel Decal	

GAS TANK



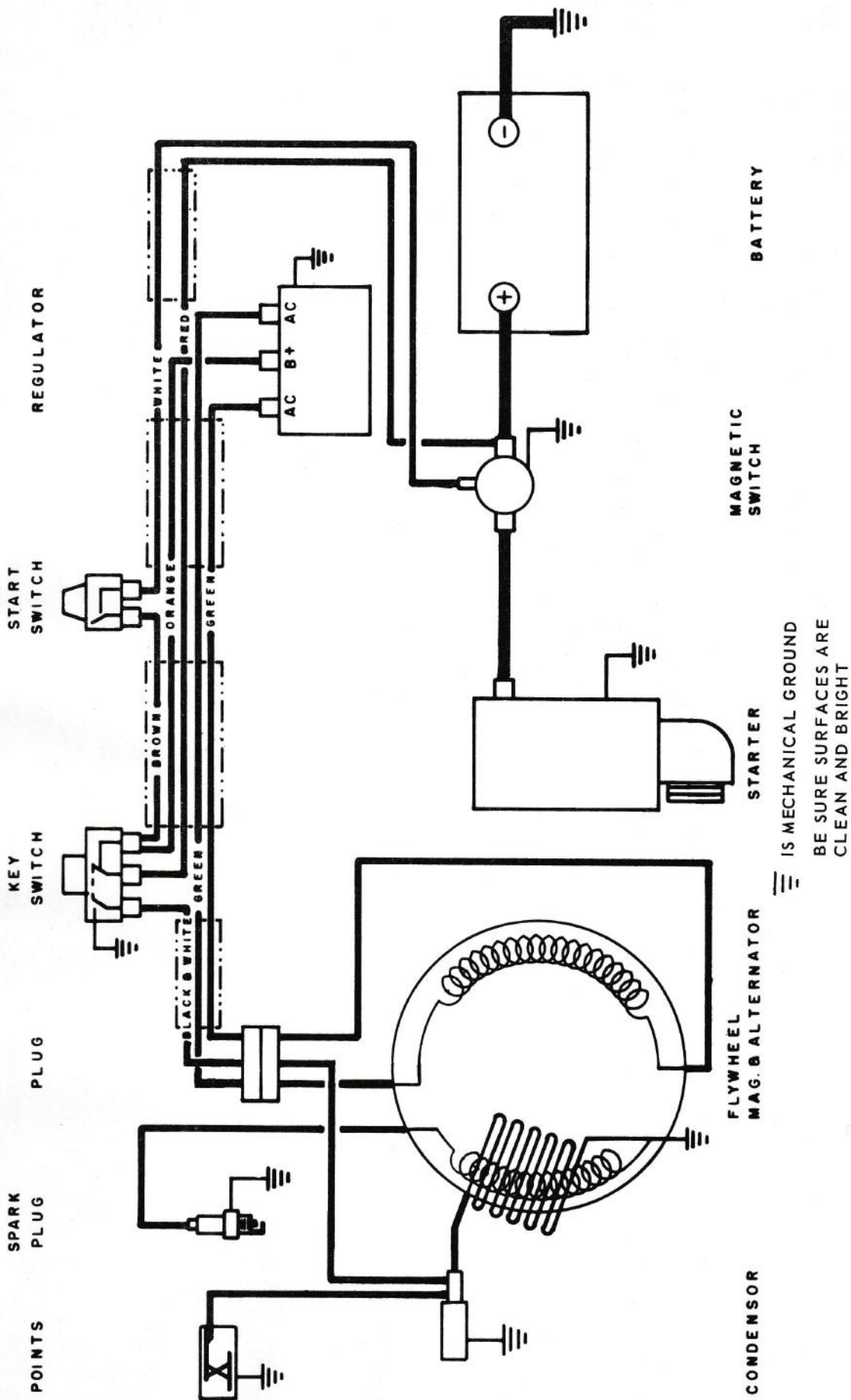
GAS TANK

<u>ITEM NO.</u>	<u>PART NO.</u>	<u>DESCRIPTION</u>	<u>REPLACES PART NO.</u>
1	10 756 P1	Tank Cap	
2	10 636 P1	Fuel Tank	
3	10 642 P1	Shut Off Valve	
4	10 868 A1	Fuel Line Assembly	
5	192 135	90° Elbow - Flared Tube	
6	10 637 A1	Fuel Tank Bracket Weldment	
7	9 414 201	3/8 Lock Nut	253-N
8	180 129	3/8 x 1 7/8 Hex. Hd. Bolt	124-S
9	10 640 P1	Fuel Tank Strap	
10	180 022	1/4 x 1 Hex. Hd. Bolt	177-S
11	9 413 314	1/4 Lock Nut	251-N
12	11 989 P1	Electrical System Warning Decal	

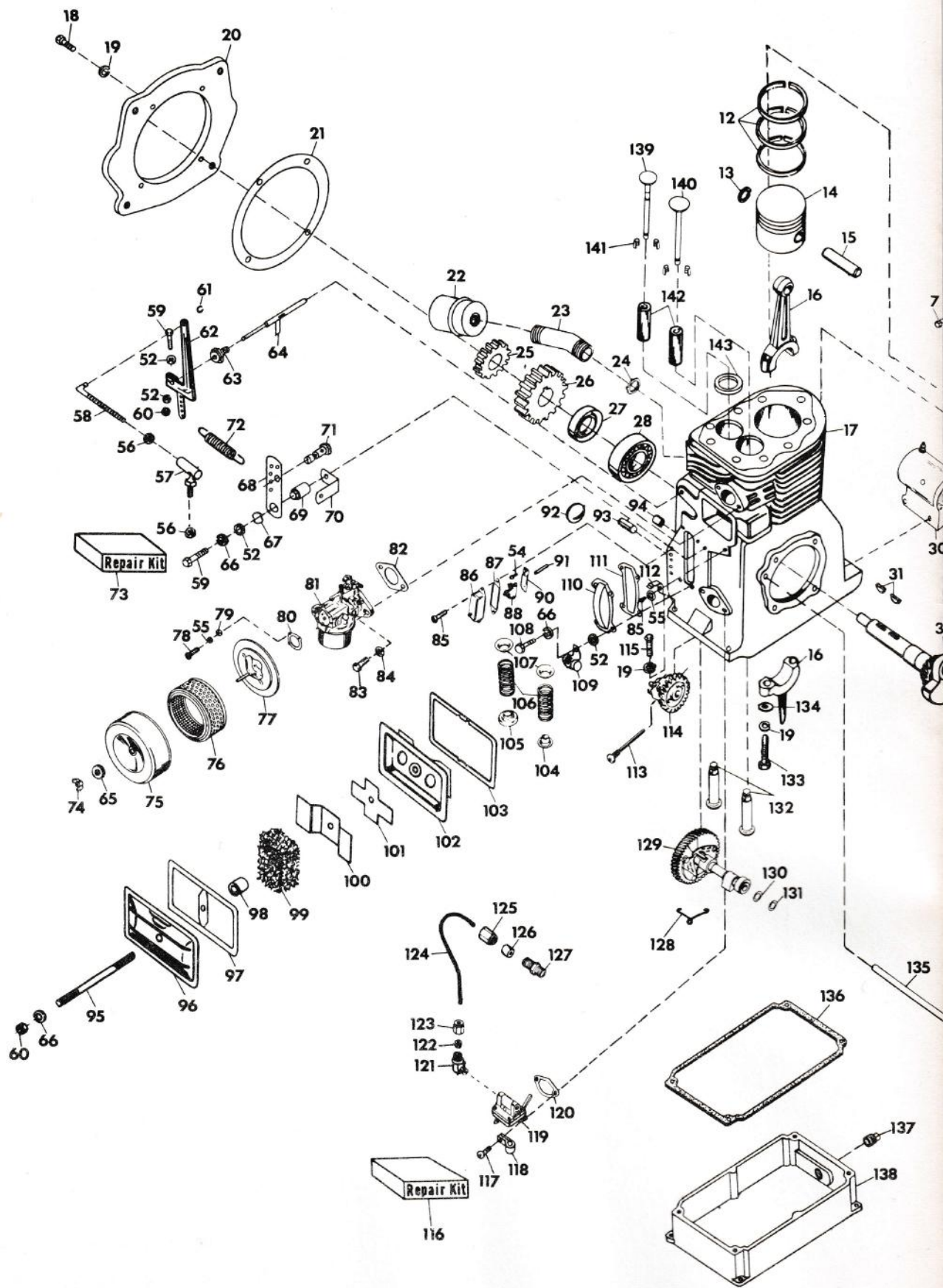
GRILLE AND ELECTRICAL COMPONENTS

<u>ITEM NO.</u>	<u>PART NO.</u>	<u>DESCRIPTION</u>	<u>REPLACES PART NO.</u>
1	10 649 A1	Hood Weldment	
2	10 644 A2	Grille Weldment	
3	120 392	9/32 Flat Washer	
4	180 016	1/4 x 1/2 Hex. Hd. Bolt	
5	10 632 P1	Battery Hold Down Hook	
6	180 020	1/4 x 3/4 Hex. Hd. Bolt	
7	120 376	5/16 Hex. Nut	
8	11 979 P1	Regulator-Rectifier	
9	120 375	1/4 Hex. Nut	
10	10 652 P1	Hood Bumper Front	
11	125 681	5/16 x 5/8 Machine Screw	
12	11 951 P1	Wiring Harness	
13	10 629 P1	Cable Tie	
14	10 885 P1	Starter Button	
15	12 020 P1	Starter Button Cap	
16	10 713 P2	Ignition Switch	
17	10 631 P1	Battery Cable	
18	7 274 P1	Battery 12 V	
19	6 981 P2	Magnetic Switch to Starter Cable	
20	10 697 P1	Front Decal	
21	10 633 P1	Battery Hold Down	
22	446 354	5/16 Flat Washer	
23	11 904 P1	Commercial 10A Hood Decal	
24	7 277 P1	Magnetic Switch	
25	180 042	1/4 x 1 3/4 Hex. Hd. Bolt	
NS	7 270 P1	Battery Electrolyte Fluid	

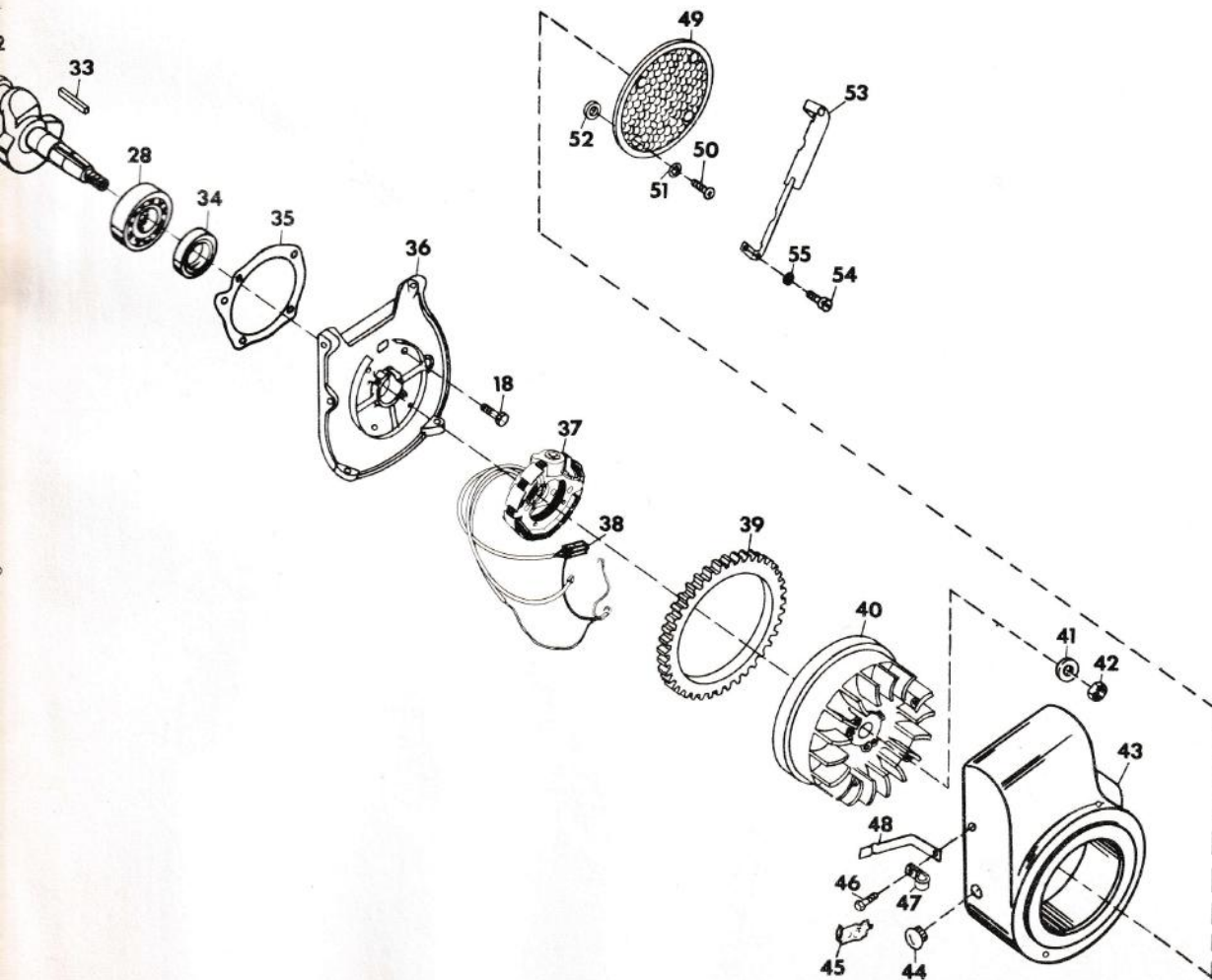
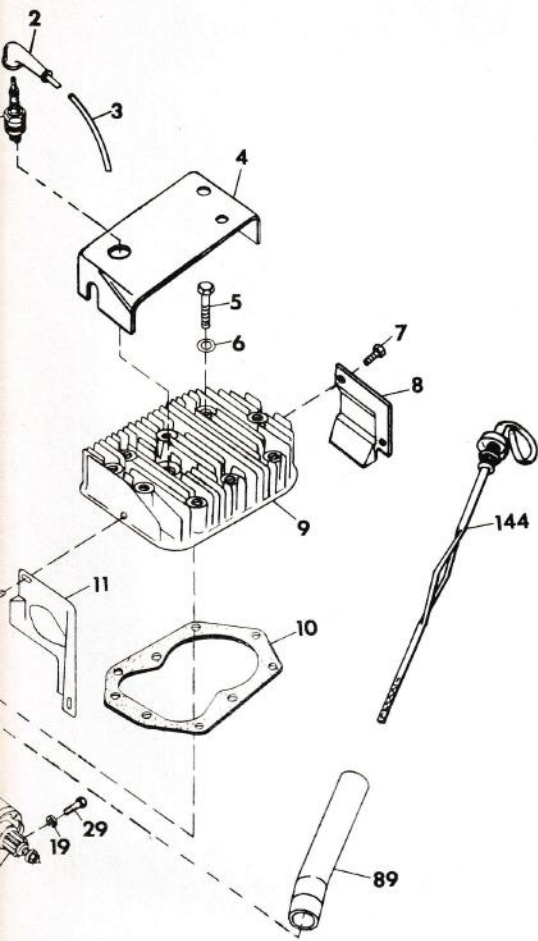
WIRING DIAGRAM



Note: ON KEY SWITCH TERMINALS, the LETTER "M" is stamped on the Switch at the Terminal. BE SURE MAGNETO WIRE (BLACK AND WHITE STRIPED) is CONNECTED TO the Terminal marked "M".



ENGINE



ENGINE

<u>ITEM NO.</u>	<u>PART NO.</u>	<u>DESCRIPTION</u>	<u>REPLACES PART NO.</u>
1	10 842 P1	Spark Plug	
2	12 022	Boot	
3	11 821 P1	Spark Plug Lead	
4	12 027 P1	Head Baffle	
5	180 126	3/8 x 1 1/2 Hex. Hd. Bolt	
6	10 805 P1	Washer	
7	180 020	1/4 x 3/4 Hex. Hd. Bolt	
8	12 029 P1	Cylinder Baffle	
9	12 035 P1	Cylinder Head	
10	10 803 P1	Head Gasket	
11	10 763 P1	Side Air Baffle	
12	10 857 P1	Ring Set Std.	
NS	10 858 P1	Ring Set .010 Oversize	
NS	10 859 P1	Ring Set .020 Oversize	
NS	11 325 P1	Ring Set .030 Oversize	
13	10 856 P1	Piston Pin Retainer	
14	10 854 A1	Piston Assembly Std., w/Pin & Retain's	
NS	10 957 A1	Piston .010 Oversize, w/Pin & Retain's	
NS	10 958 A1	Piston .020 Oversize, w/Pin & Retain's	
NS	10 959 A1	Piston .030 Oversize, w/Pin & Retain's	
15	10 855 P1	Piston Pin	
16	10 851 A1	Connecting Rod Assembly	
17	12 032 A1	Cylinder Block Assembly	
18	180 122	3/8 x 1 Hex. Hd. Bolt	
19	120 382	3/8 Lock Washer	
20	10 731 P1	Engine Adaptor	
21	10 732 P1	Engine to Adaptor Gasket	
22	8 227 P1	Muffler	
23	10 865 P1	Muffler Tube	
24	10 866 P1	Conduit Nut	
25	11 006 P1	Transmission Drive Gear	
26	11 005 P1	Transmission Drive Gear	
27	10 799 P1	Rear Oil Seal	
28	10 794 P1	Ball Bearing	
29	10 850 P1	3/8 x 1 1/4 Hex. Hd. Bolt (Special)	
30	12 039 A1	High Mount Bendix Starter	
31	124 546	#6 Woodruff Key	
32	11 391 P1	Crankshaft	
33	10 818 P1	Key	
34	10 800 P1	Front Oil Seal	
35	10 796 P1	Bearing Plate Gasket	
36	12 041 P1	Bearing Plate	
37	12 045 A1	Magneto-Alternator Stator	
38	12 048 P1	Terminal Block	
39	12 149 P1	Ring Gear	
40	12 043 A1	Flywheel Assembly	
41	11 988 P1	Washer	
42	10 952 P1	5/8 Lock Nut	
43	12 025 P1	Blower Housing	
44	10 922 P1	Button Plug	
45	7 331 P1	Clip	
46	180 018	1/4 x 5/8 Hex. Hd. Bolt	
47	10 837 P1	Cable Clip	

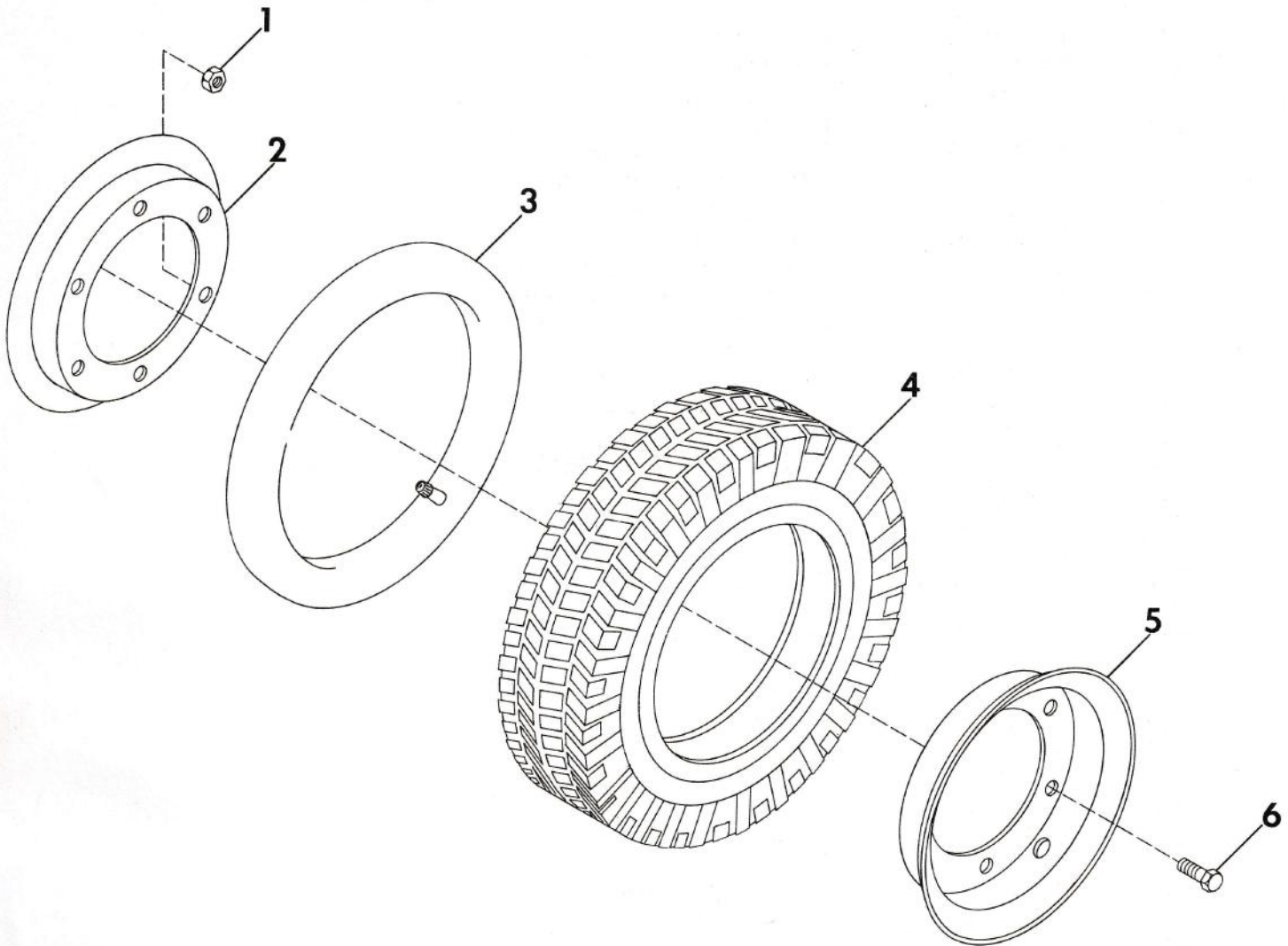
ENGINE (continued)

<u>ITEM NO.</u>	<u>PART NO.</u>	<u>DESCRIPTION</u>	<u>REPLACES PART NO.</u>
48	10 789 P1	Choke Bracket	
49	12 044 P1	Grass Screen	
50	157 728	1/4 x 5/8 Mach. Screw	
51	120 423	1/4 Lock Washer	
52	120 392	9/32 Washer	
53	12 030 P1	Deflector	
54	188 978	#10 x 3/8 Hex. Hd. Mach. Screw	
55	121 801	#10 Lock Washer	
56	120 614	#10 Nut	
57	10 821 P1	Ball Joint	
58	10 828 P1	Throttle Rod	
59	180 024	1/4 x 1 1/4 Hex. Hd. Bolt	
60	120 375	1/4 Nut	
61	10 827 P1	Rod Retainer	
62	10 825 P1	Governor Lever	
63	10 826 P1	Bushing	
64	10 829 A1	Governor Cross-Shaft Assembly	
65	10 946 P1	Sealing Washer	
66	120 380	1/4 Lock Washer	
67	10 822 P1	Tension Washer	
68	10 830 P1	Speed Control Bracket	
69	10 831 P1	Spacer	
70	10 832 P1	Adj. Screw Bracket	
71	10 834 P1	Swivel Wire Clamp	
72	10 824 P1	Governor Spring	
73	10 792 A1	Carburetor Repair Kit	
74	10 413 P1	1/4 Wing Nut	
75	10 901 P1	Air Cleaner Cover	
NS	10 862 P1	Air Cleaner Inst. Decal	
76	10 900 P1	Air Cleaner Element	
77	10 949 P1	Air Cleaner Base	
78	133 624	#10 x 3/8 F.H.M. Screw	
79	446 143	3/16 Washer	
80	10 760 P1	Air Cleaner Gasket	
81	10 788 A1	Carburetor Assembly	
82	10 790 P1	Carburetor Gasket	
83	180 079	5/16 x 1 Hex. Hd. Bolt	
84	138 538	5/16 Lock Washer	
85	159 908	#10 x 3/8 P.H. Screw	
86	10 841 A1	Breaker Cover	
87	10 839 P1	Cover Gasket	
88	10 853 P2	Point Set	
89	10 807 P1	Oil Fill Tube	
90	11 649 P1	Breaker Point Bracket	
91	10 838 P2	Breaker Rod	
92	10 948 P1	Expansion Plug	
93	11 648 P1	Governor Shaft	
94	11 647 P1	Needle Bearing	
95	10 774 P1	Valve Cover Stud	
96	10 766 P1	Valve Cover	
97	10 773 P1	Gasket	
98	10 772 P1	Breather Seal	

ENGINE (continued)

<u>ITEM</u> <u>NO.</u>	<u>PART NO.</u>	<u>DESCRIPTION</u>	<u>REPLACES</u> <u>PART NO.</u>
99	10 768 P1	Breather Filter	
100	10 769 P1	Breather Baffle	
101	10 771 P1	Breather Reed	
102	10 767 P1	Breather Plate Assembly	
103	10 770 P1	Valve Cover Gasket	
104	10 781 P1	Valve Spring Retainer	
105	10 782 P1	Valve Rotator	
106	10 778 P1	Valve Spring	
107	10 780 P1	Spring Retainer, Upper	
108	180 016	1/4 x 1/2 Hex. Hd. Bolt	
109	10 845 P1	Condenser	
110	10 797 P1	Camshaft Cover	
111	10 798 P1	Camshaft Cover Gasket	
112	10 953 P1	Throttle Bracket	
113	10 833 P1	Governor Stop Pin	
114	10 823 A1	Governor Gear Assembly	
115	180 124	3/8 x 1 1/4 Hex. Hd. Bolt	
116	10 931 A1	Repair Kit, Fuel Pump	
117	160 515	1/4 x 1/2 Machine Screw	
118	10 847 P1	Cable Clip	
119	11 651 A1	Fuel Pump	
NS	11 906 P1	Heavy Duty Fuel Pump	
120	10 820 P1	Gasket	
121	L-814-D	Elbow	
122	L-814-I	Sleeve	
123	L-814-K	Nut	
124	11 650 P1	Fuel Line	
125	10 935 P1	Nut	
126	10 934 P1	Sleeve	
127	10 936 P1	Connector	
128	10 947 P1	Actuating Spring	
129	10 775 A1	Camshaft Assembly	
130	10 786 P1	Camshaft Spacer .005	
131	10 787 P1	Camshaft Spacer .010	
132	10 784 A1	Tappet Assembly	
133	10 852 P1	Connecting Rod Screw	
134	120 394	13/32 Washer	
135	10 783 P1	Camshaft Pin	
136	12 148 P1	Oil Pan Gasket	
137	103 869	3/4 Pipe Plug	
138	12 147 P1	Oil Pan	
139	10 777 P1	Exhaust Valve	
140	10 776 P1	Intake Valve	
141	10 785 P1	Valve Keeper	
142	11 646 P1	Valve Guide	
143	12 150 P1	Exhaust Valve Insert	
144	10 806 A1	Dip Stick Assembly	
NS	12 362 P1	Intake Valve Insert	

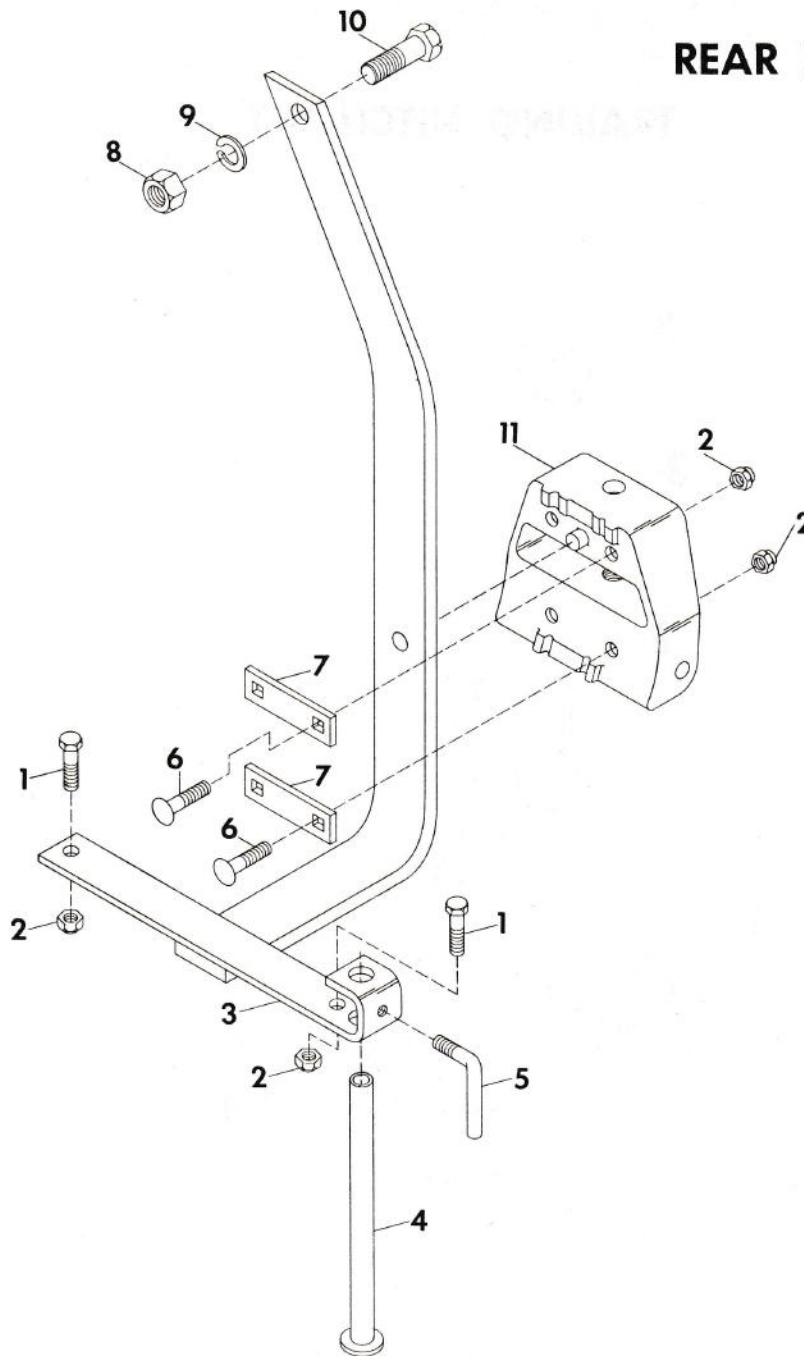
WHEEL ASSEMBLY



WHEEL ASSEMBLY

<u>ITEM NO.</u>	<u>PART NO.</u>	<u>DESCRIPTION</u>	<u>REPLACES PART NO.</u>
1	124 829	3/8 Hex. Nut	
2	L-616-IR	Inner Rim	
3	11 645 PI	Tube	
4	11 644 PI	Tire	
5	L-616-OR	Outer Rim, (with valve hole)	
6	122 104	3/8 x 5/8 Hex. Hd. Bolt	179-S

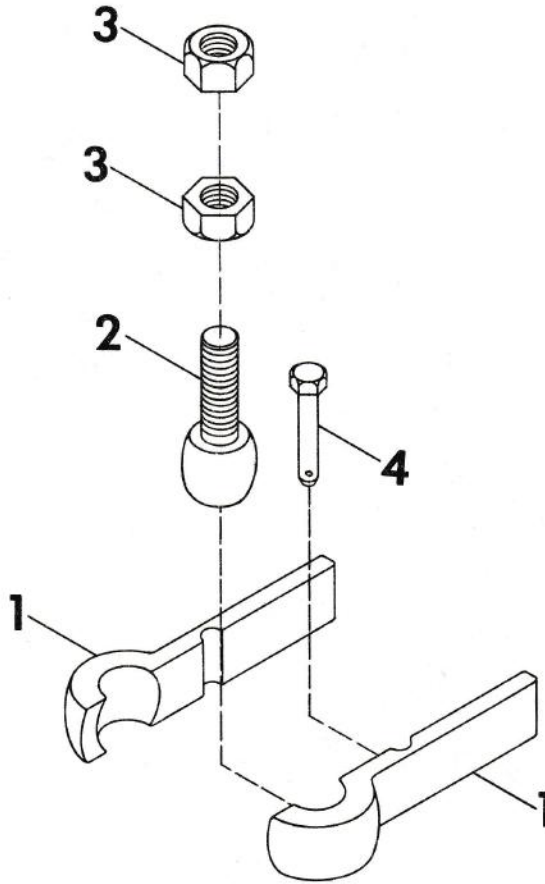
REAR HITCH



REAR HITCH

<u>ITEM NO.</u>	<u>PART NO.</u>	<u>DESCRIPTION</u>	<u>REPLACES PART NO.</u>
1	180 126	3/8 x 1 1/2 Hex. Hd. Bolt	
2	456 004	3/8 Lock Nut	
3	11 952 A1	Rear Hitch Weldment	
4	6 027 A1	Sprayer Tank Stand	
5	A-482-3	Handle	
6	126 416	3/8 x 1 3/4 Carriage Bolt	
7	11 955 P1	Plate	
8	124 589	5/8 Hex Nut	
9	121 574	5/8 Lock Washer	
10	271 547	5/8 x 1 1/2 Hex. Hd. Bolt	
11	11 956 P1	Hitch Casting	

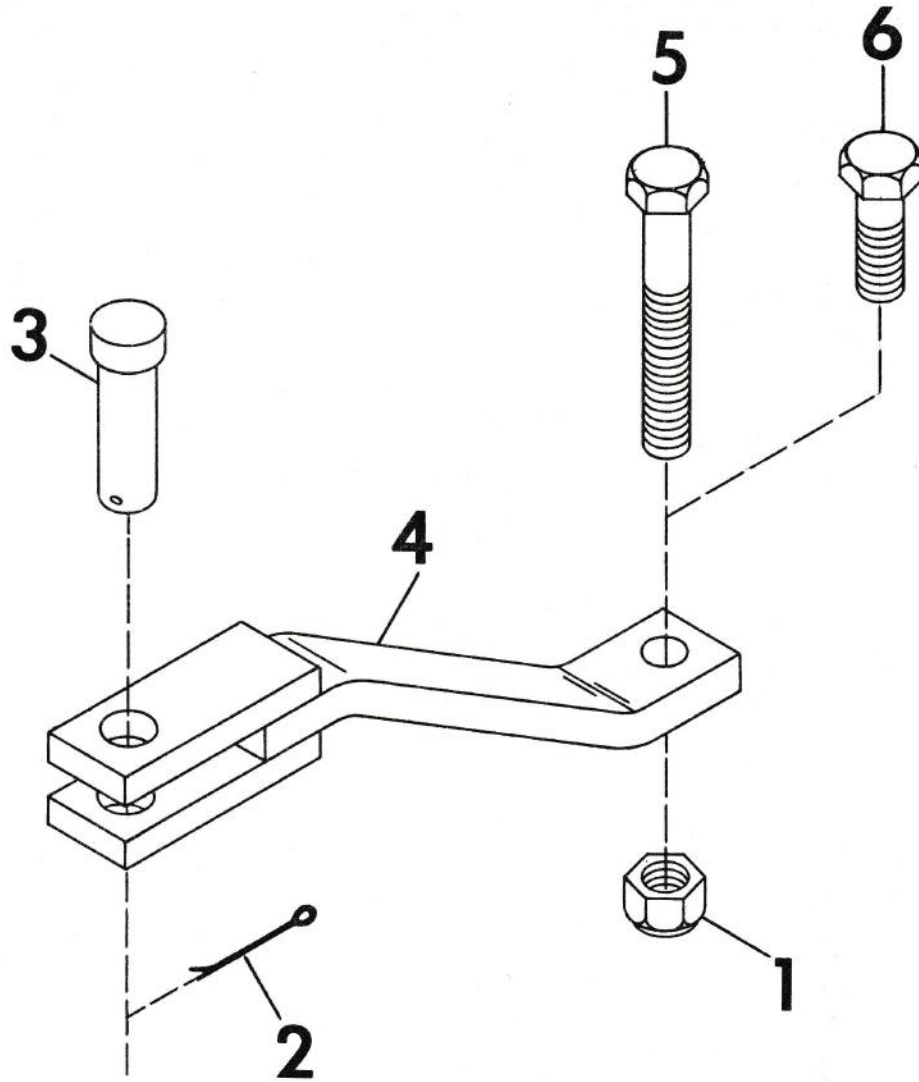
TRAILING HITCH KIT



TRAILING HITCH KIT 11 627 A1

<u>ITEM NO.</u>	<u>PART NO.</u>	<u>DESCRIPTION</u>	<u>REPLACES PART NO.</u>
1	HS-104	Split Socket	
2	HS-101	Ball Stud	
3	124 944	5/8 Jam Nut	
4	11 685 P1	Drawbar Pin	

COUPLER STRUT WELDMENT KIT



COUPLER STRUT WELDMENT KIT 11 980 A1

<u>ITEM NO.</u>	<u>PART NO.</u>	<u>DESCRIPTION</u>	<u>REPLACES PART NO.</u>
1	435 507	1/2 Lock Nut	
2	137 204	1/8 x 1 1/2 Cotter Pin	
3	10 708 Pl	Clevis Pin	
4	11 664 A1	Coupler Strut Weldment	
5	180 192	1/2 x 3 1/2 Hex. Hd. Bolt	
6	180 177	1/2 x 1 1/2 Hex. Hd. Bolt	

NOTE: The attachment you are using determines whether item #5 or item #6 is to be used. Use the one that is applicable.